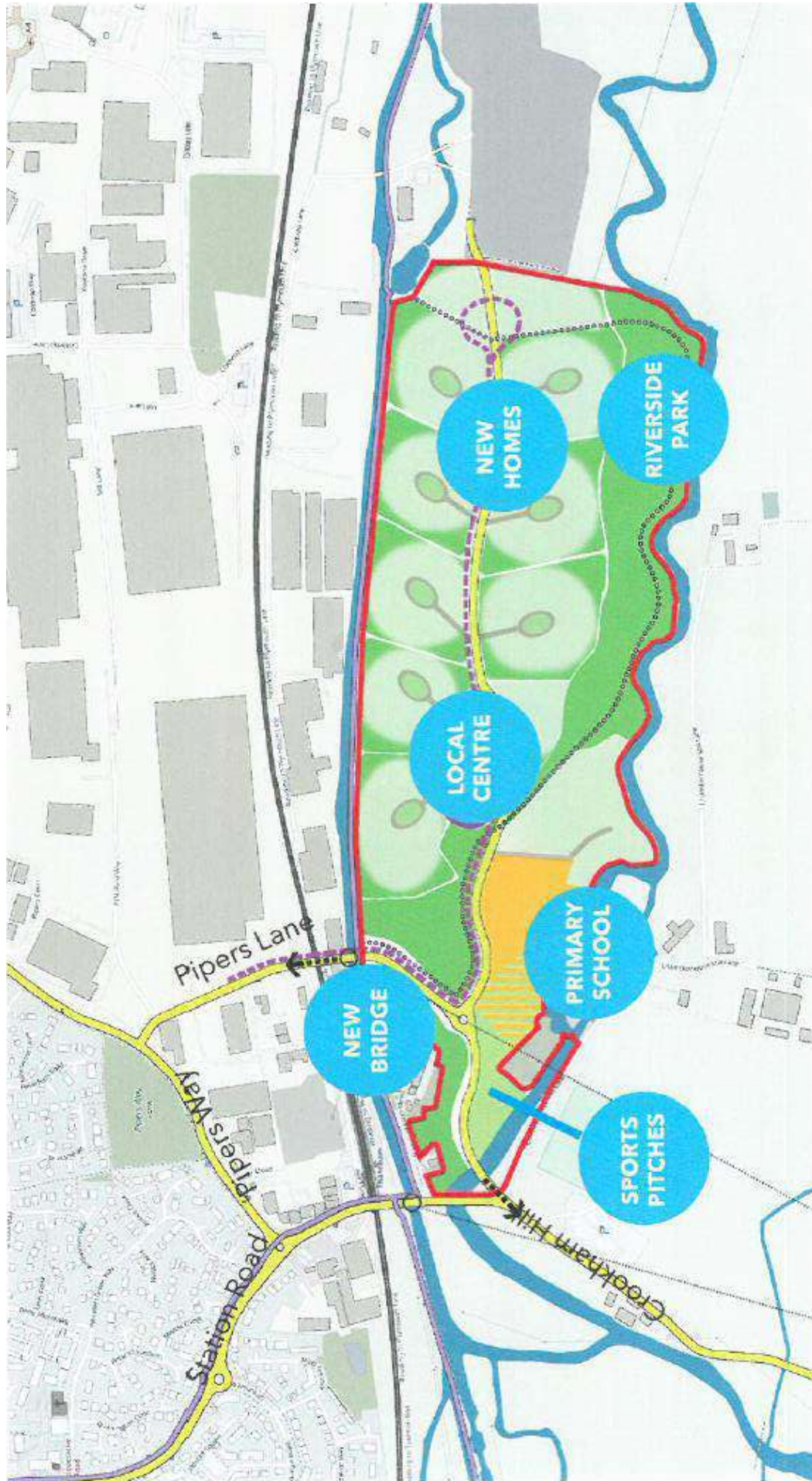


c. Flood map

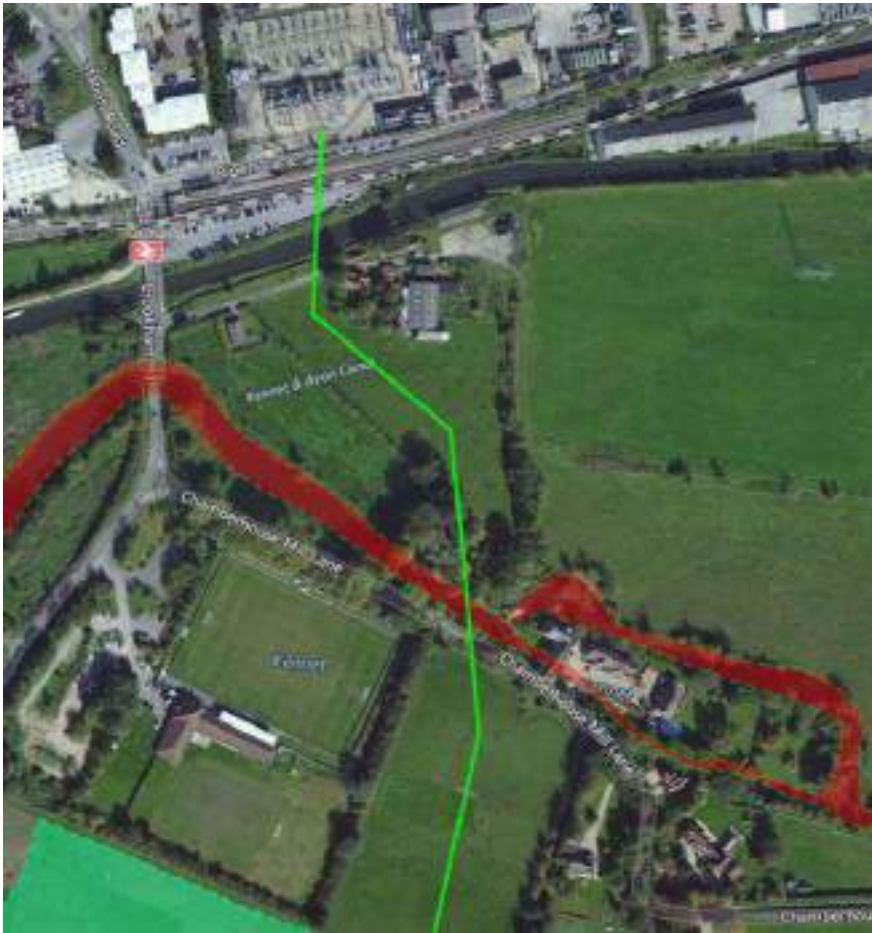


Annex 3 – Western option

- a. Proposed development site (subject to planning application and the securing of planning permission)



b. River Kennet SSSI



c. Mineral extraction



d. Registered Common Land and Crookham Common SSSI. Cable route predominantly within highway



e. River Enbourne crossing

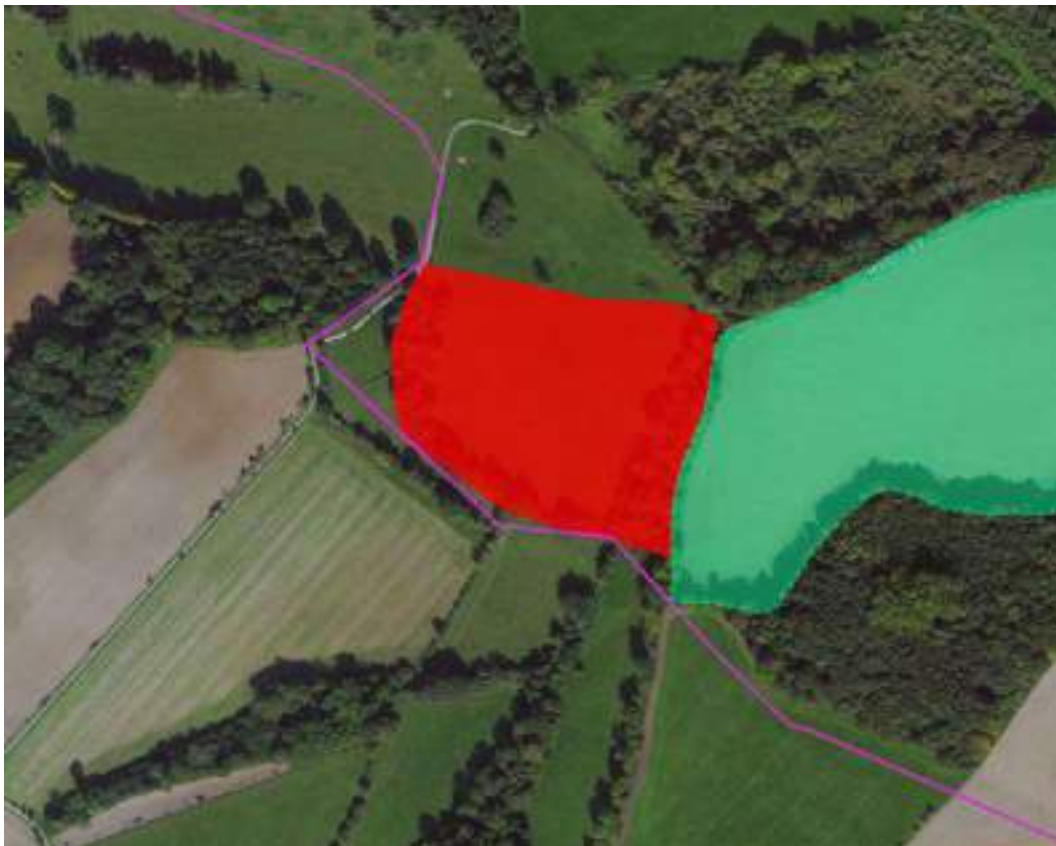


Annex 4 - Central option

a. River Kennet SSSI



b. Route in the vicinity of a scheduled monument



c. Tree clearance required

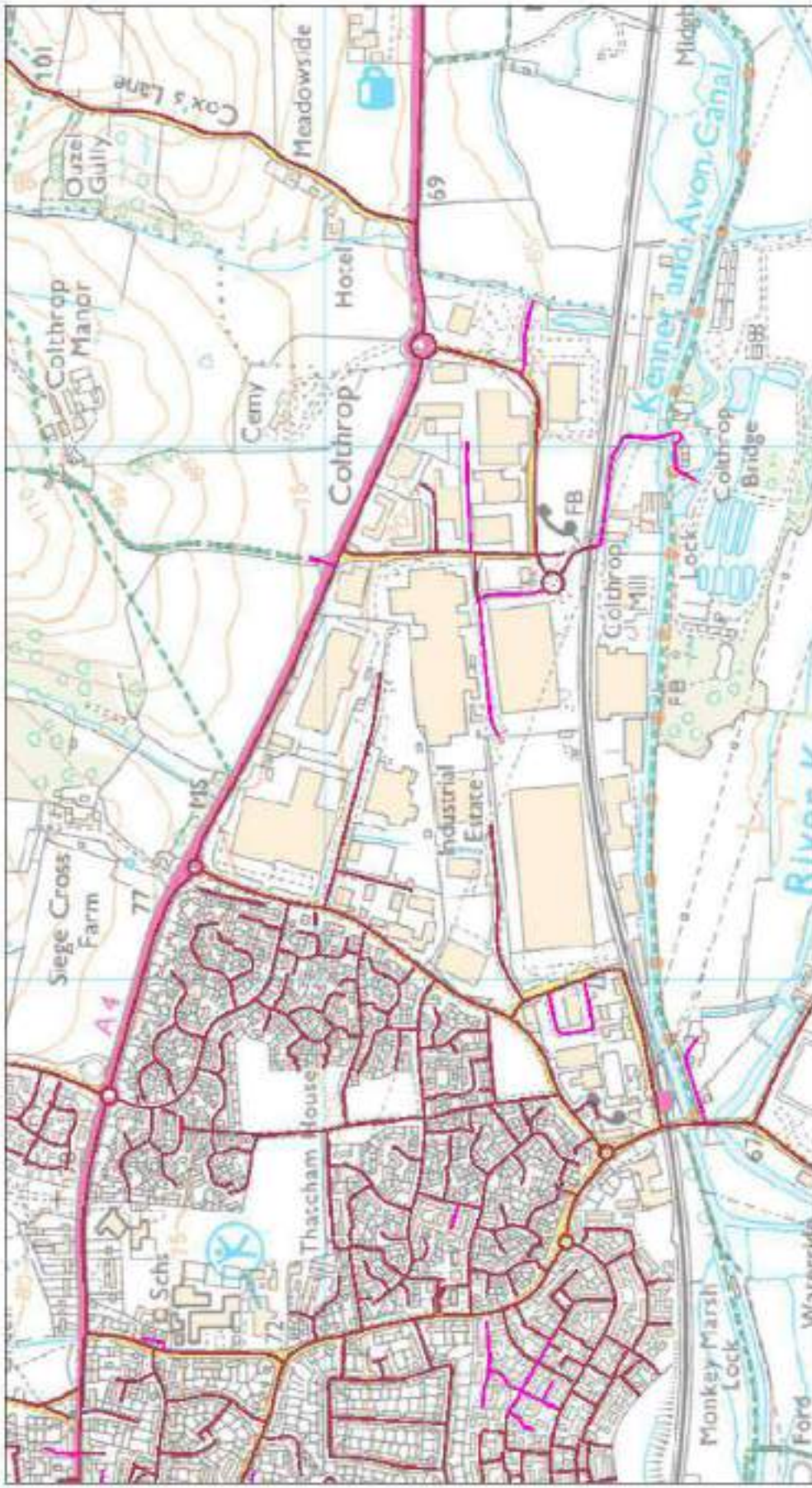


d. River Enbourne crossing



Annex 5 – Eastern option

a. Adopted highway limitations



October 4, 2018

- DISTRICT BOUNDARY
- PRIVATE ROADS
- PRIVATE STREETS
- WBC ADOPTED ROADS
- HIGHWAYS AGENCY ROADS



Reproduced from Ordnance Survey map with the permission of the Controller of Her Majesty's Stationery Office. (c) Crown Copyright 2018. West Berkshire Council 000024 155
West Berkshire Council

b. Proposed drill sites



Proposed drill A



Proposed drill B

c. Drill site constraints



Drill site B in the vicinity of a SSS



Route back to highway subject to land identified for mineral extraction

d. River Enbourne crossing

